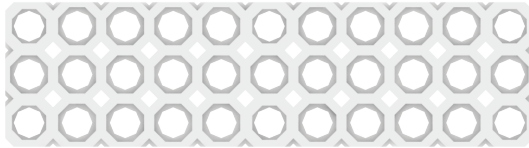




12 Aspirador de mano



Piezas



Bloque N 3x11 (4)



Bloque N 3x7 (3)



Bloque N 2x11 (4)



Bloque N 2x7 (1)



Bloque N 2x9 (2)



Bloque N 3x9 (3)



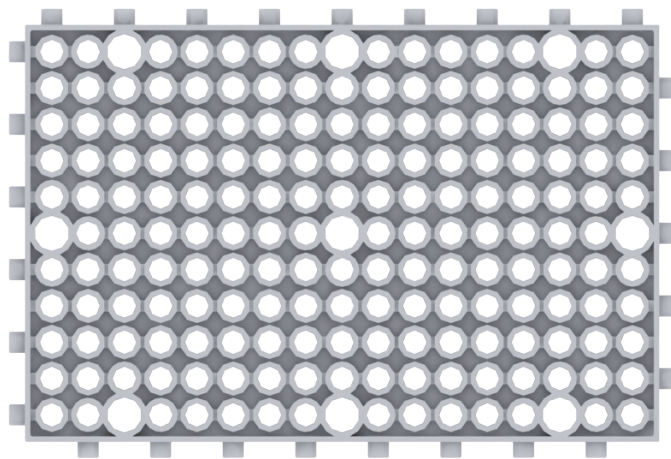
Bloque N 1x7 (2)



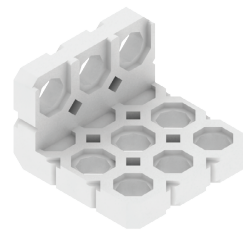
Bloque N 1x5 (2)



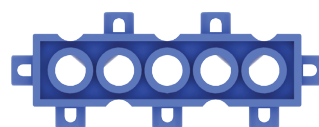
Remache doble tipo 1 (1)



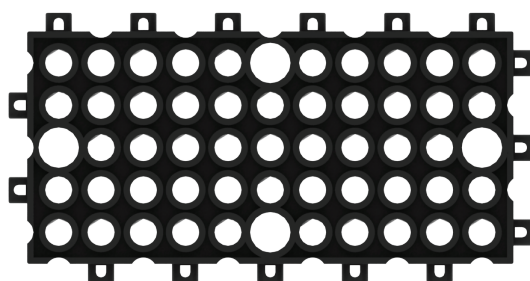
Bloque 11x17 (1)



Adaptador L 3x3 (4)



Bloque 1x5 (4)



Bloque 5x11 (4)



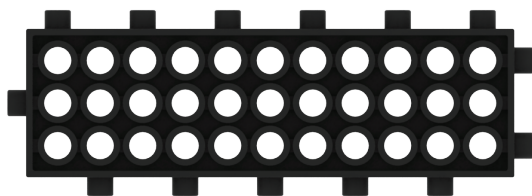
Arandela (2)



Adaptador L (2)



Remache básico (8)



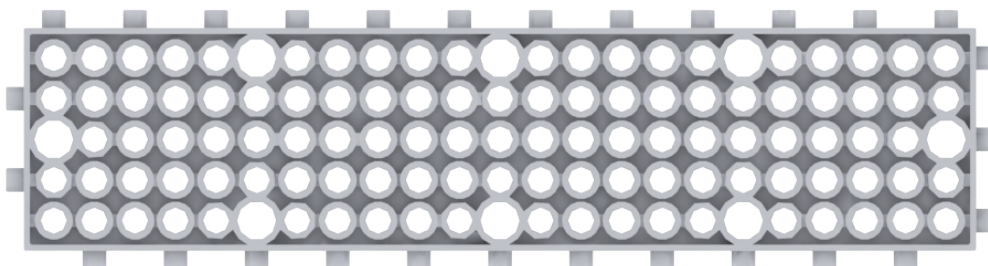
Bloque 3x11 (4)



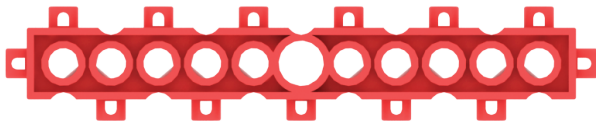
Remache S (24)



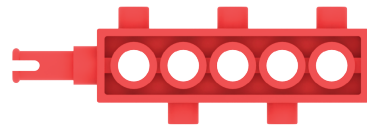
Remache L (4)



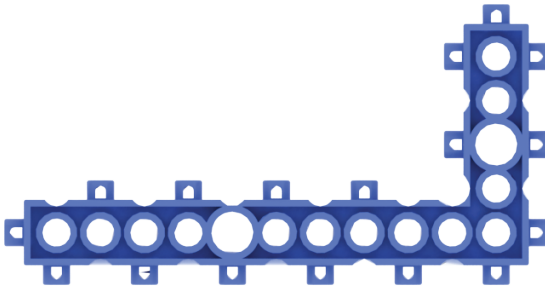
Bloque 5x23 (2)



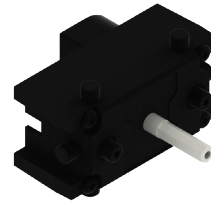
Bloque 1x11 (4)



Bloque con eje (2)



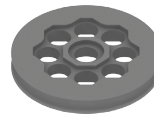
Bloque 90° (1)



Motor 1 (2)



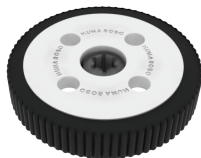
Bloque de unión 2 (4)



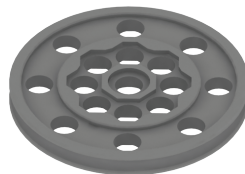
Llanta/Hub 1 (2)



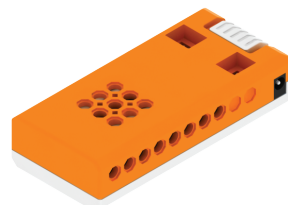
Cubierta/Wheel 1 (2)



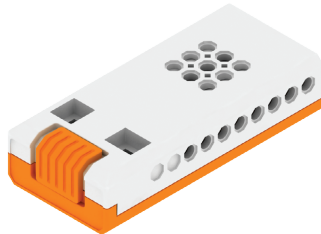
Rueda S (2)



Llanta/Hub 2 (2)



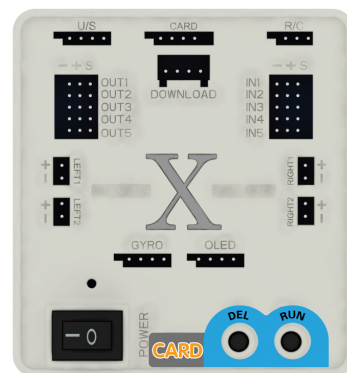
Portapilas o portabaterías 1 (1)



Portapilas o portabaterías 2 (1)

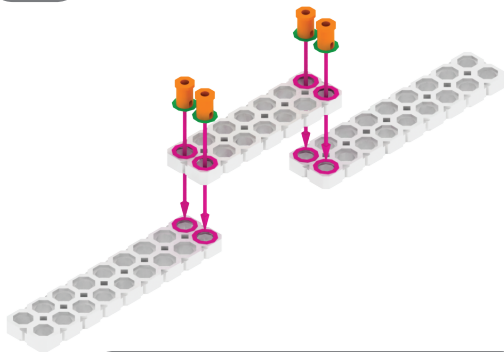


Cable de conexión (2)

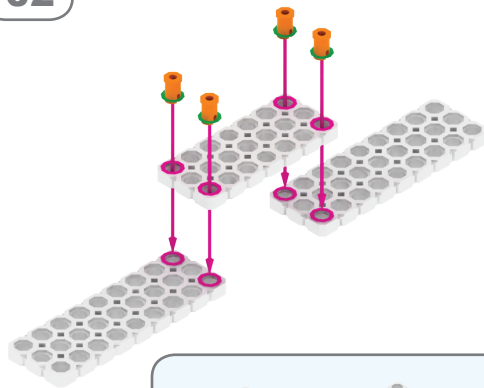


Placa base (1)

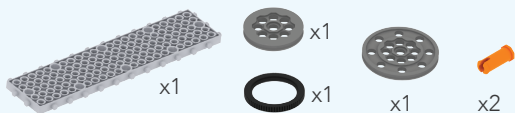
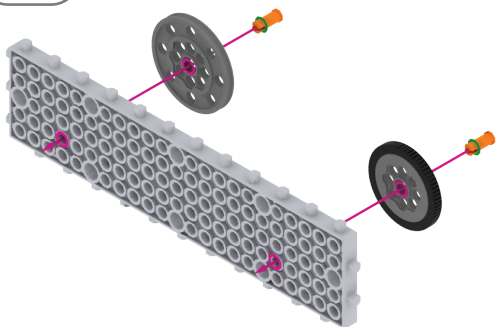
01



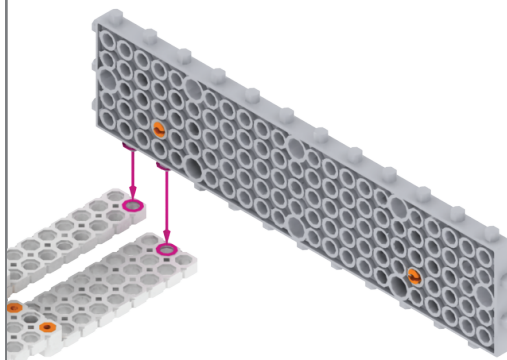
02



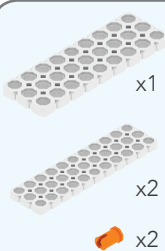
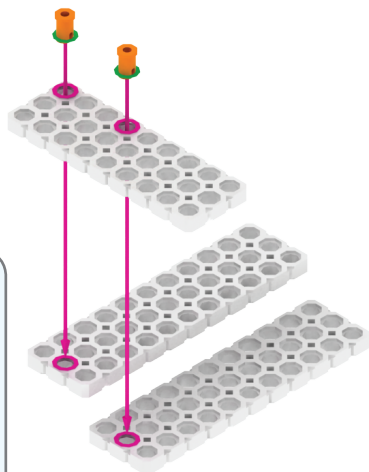
03



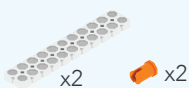
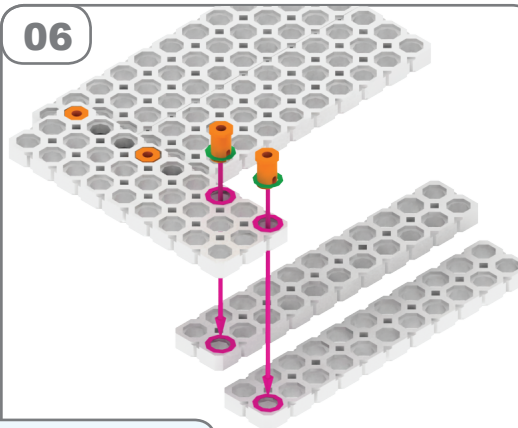
04



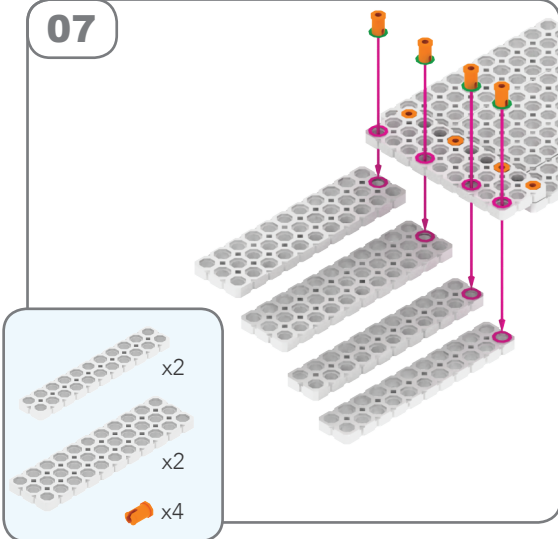
05



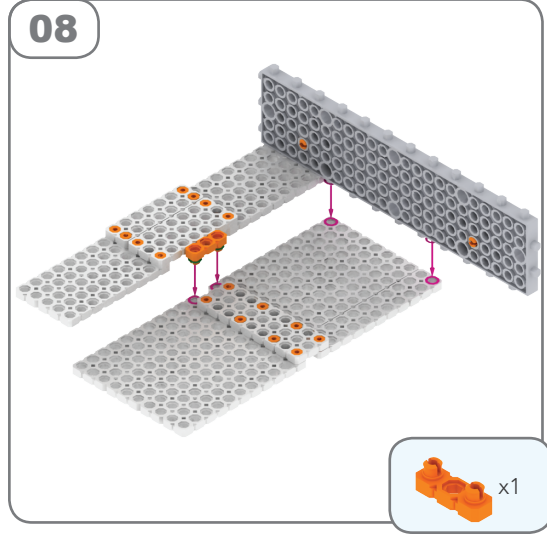
06



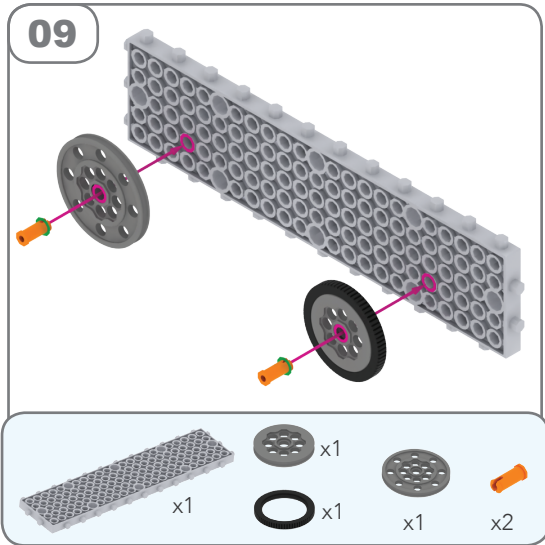
07



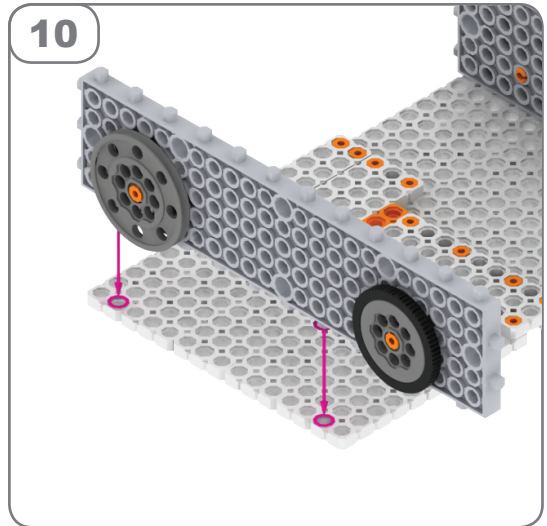
08



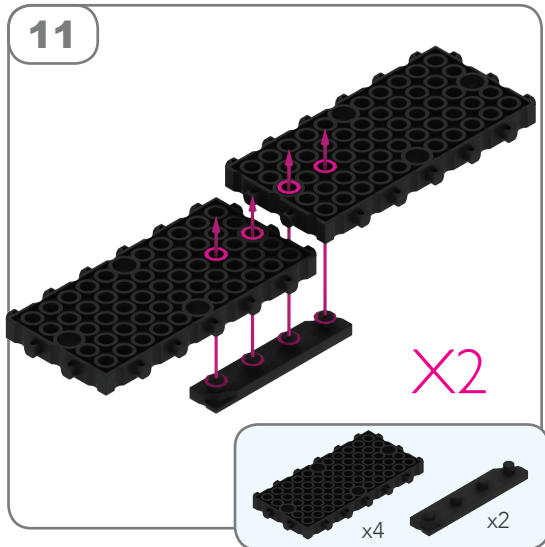
09



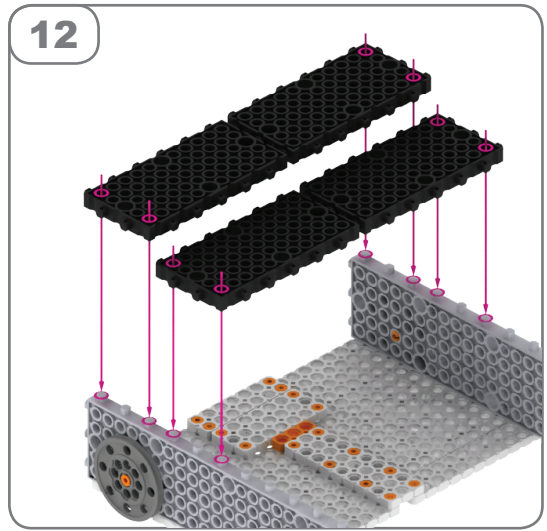
10

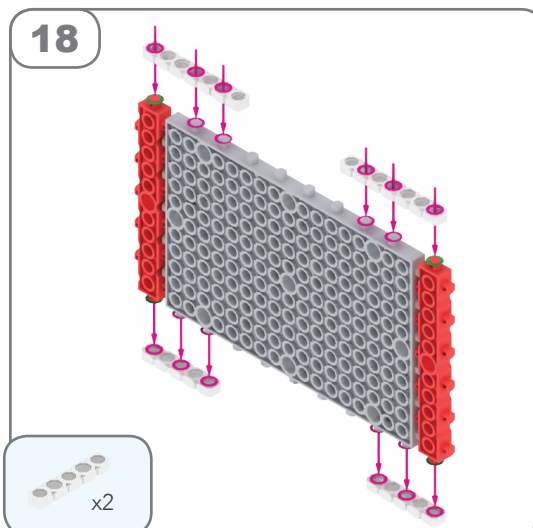
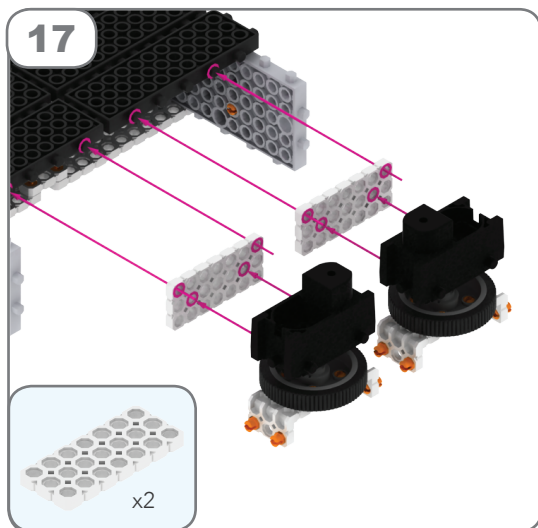
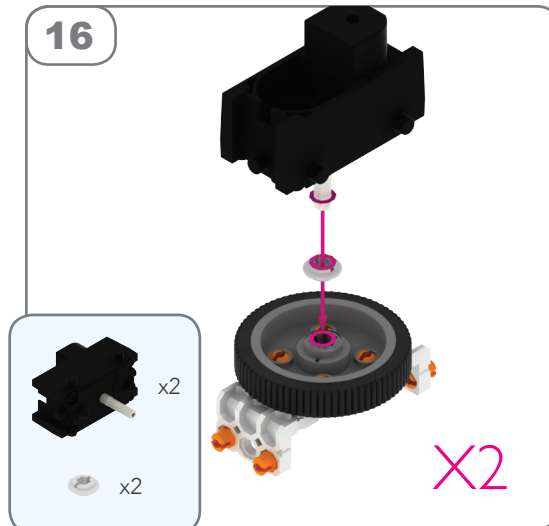
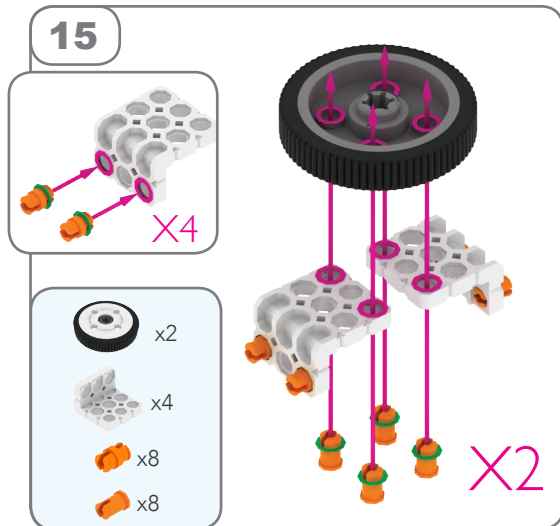
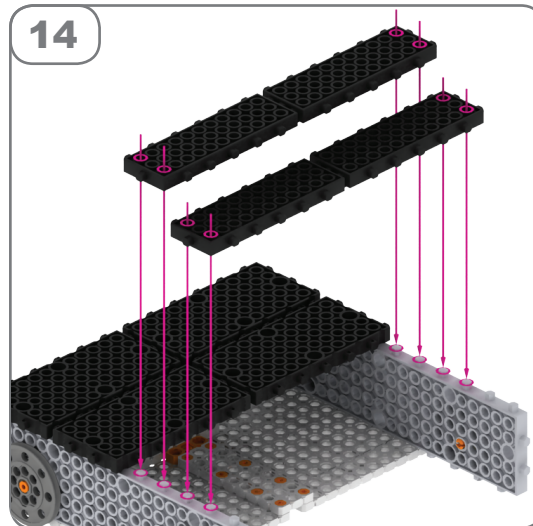
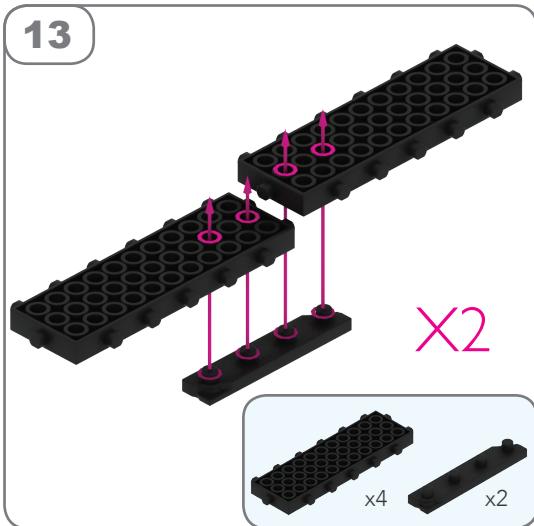


11



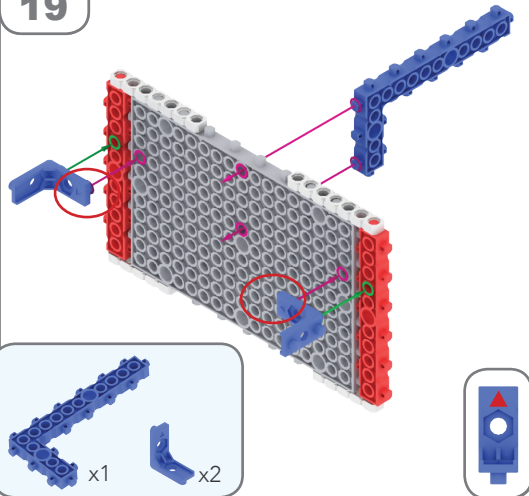
12



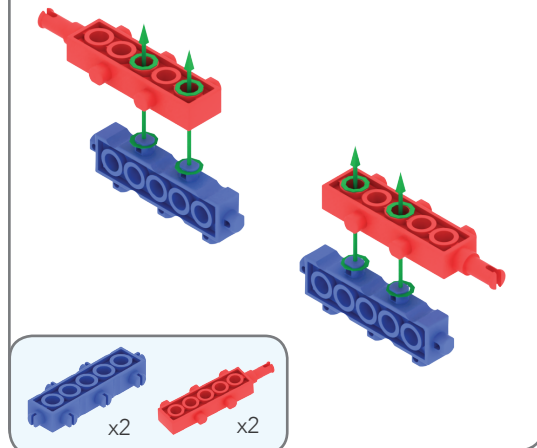


Nota: Este triángulo rojo ▲ señala la posición

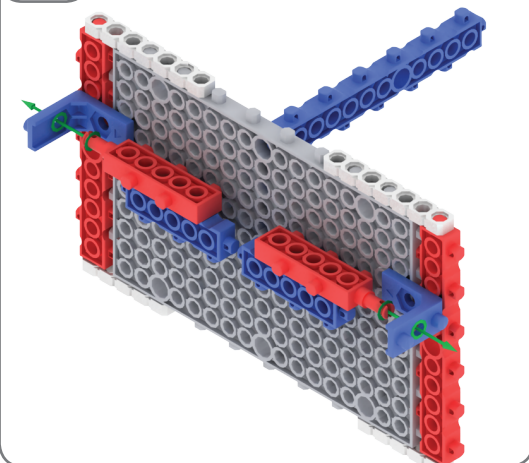
19



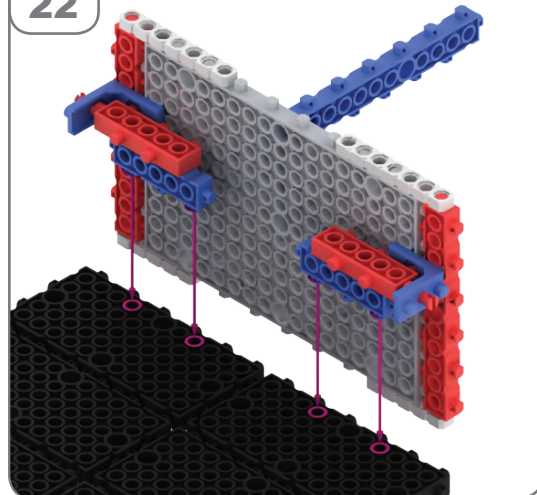
20



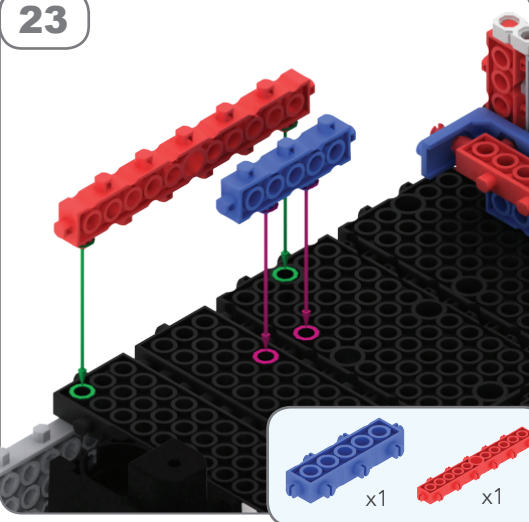
21



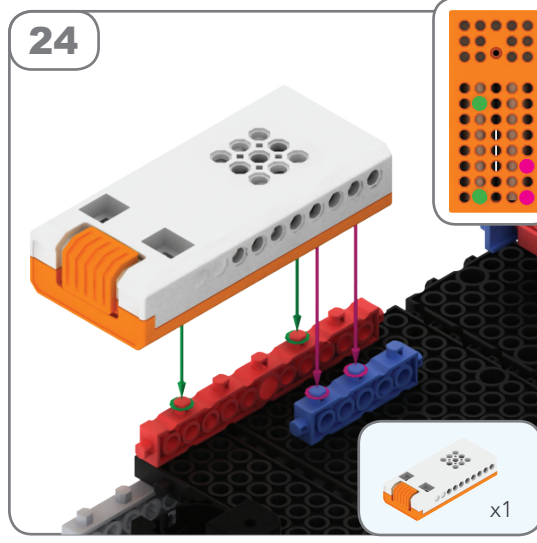
22



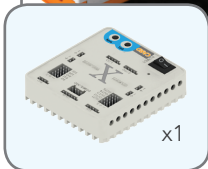
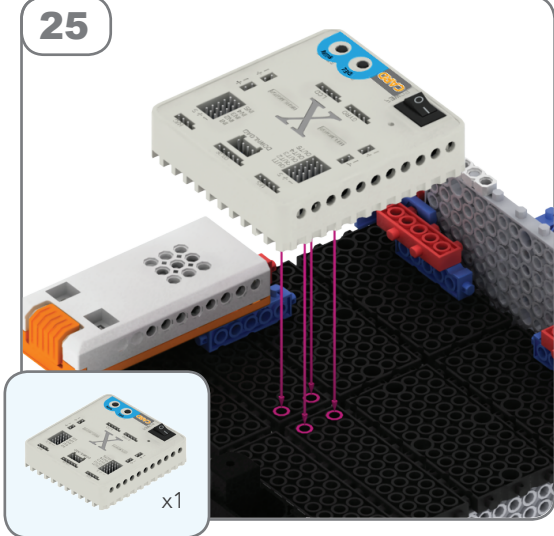
23



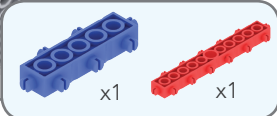
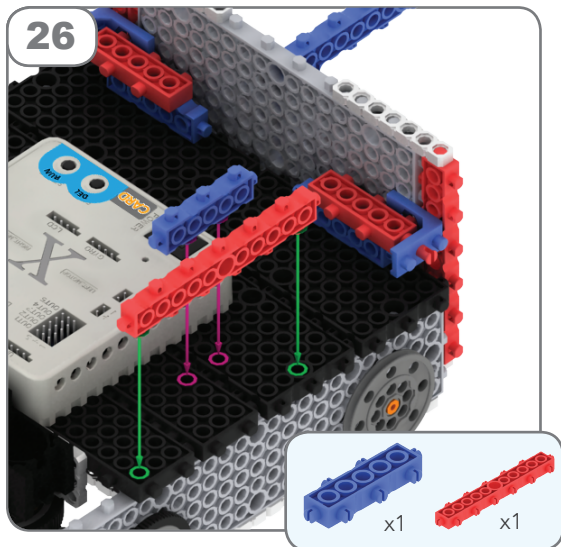
24



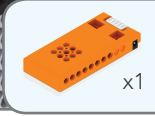
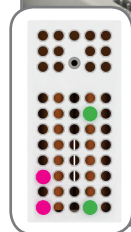
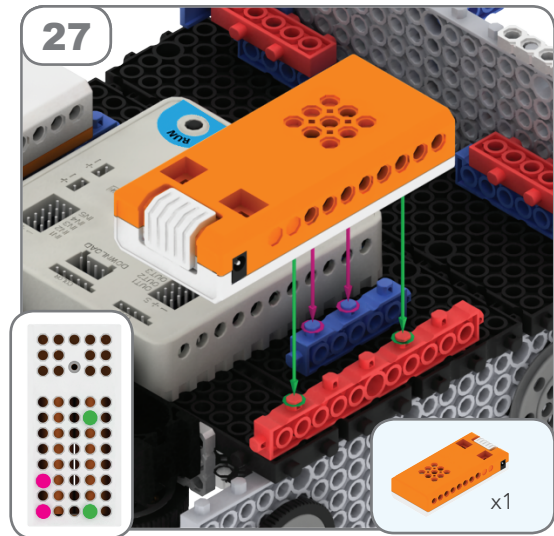
25



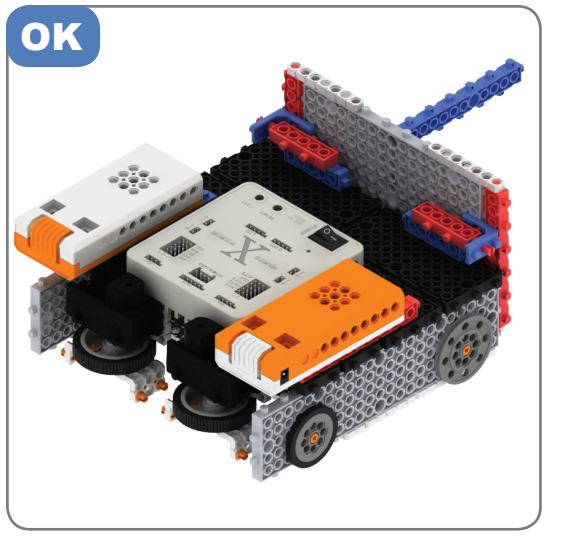
26



27

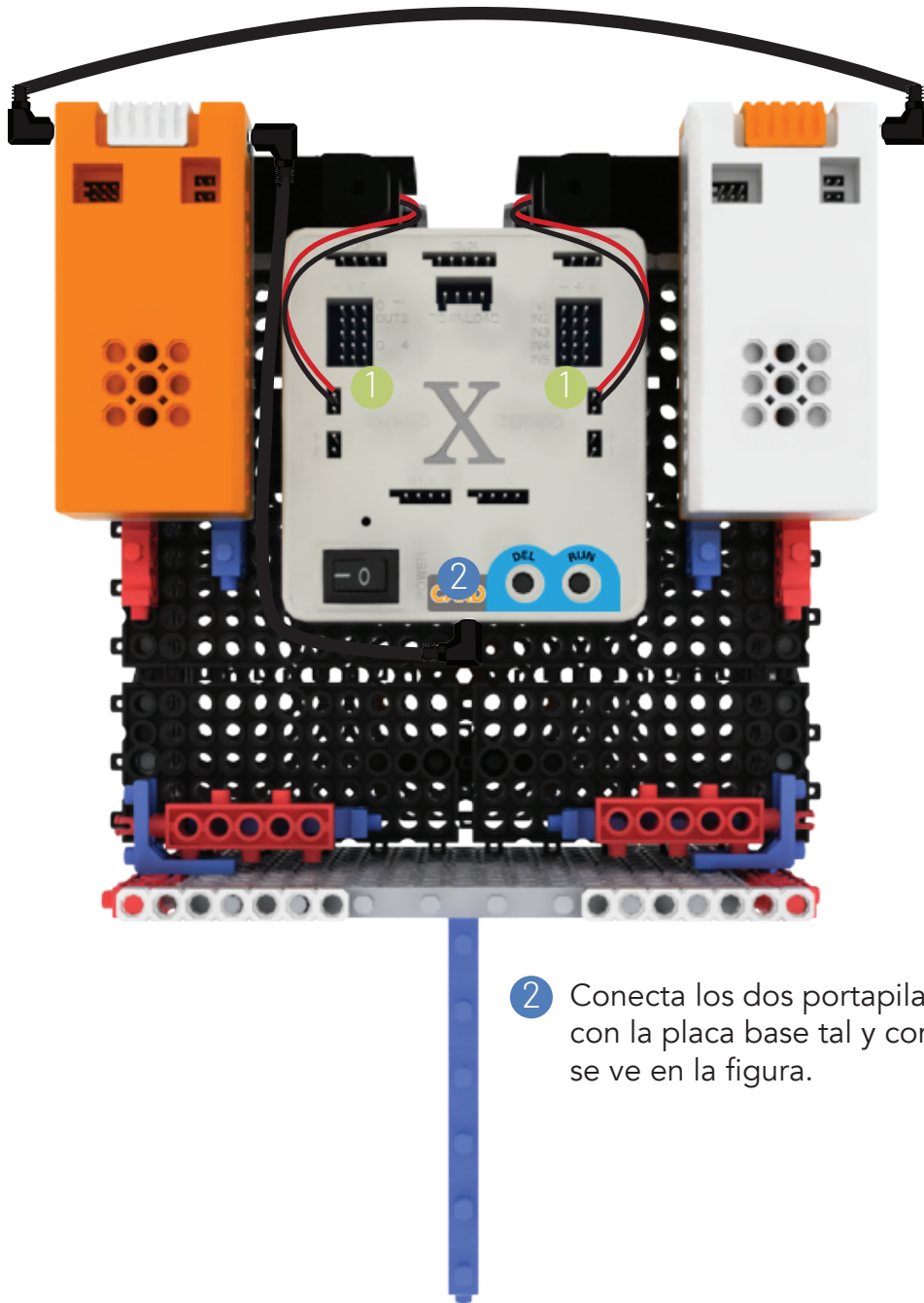


OK



¿Cómo hacer la conexión?

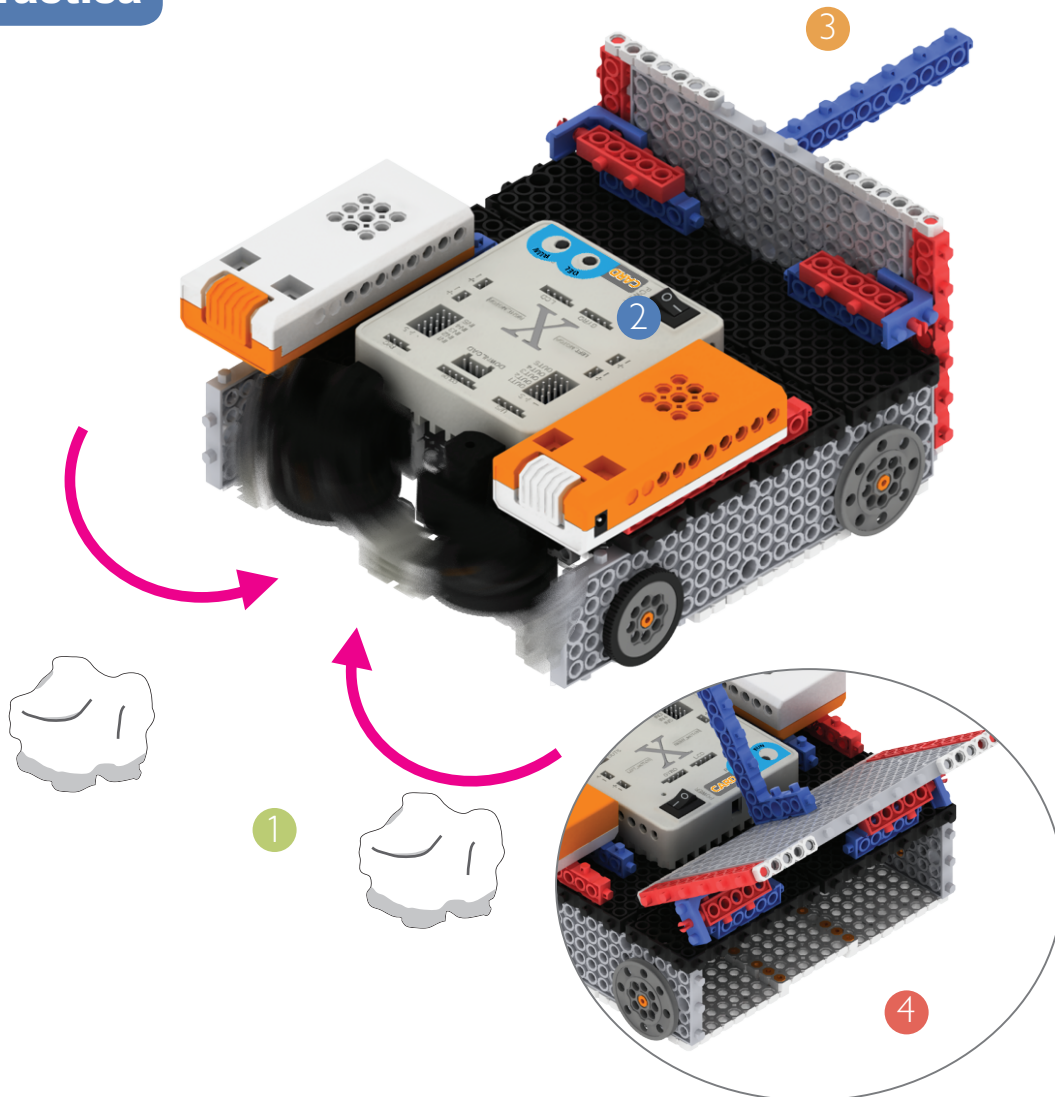
- 1 Conecta los dos motores con la placa base tal y como se muestra a continuación.



- 2 Conecta los dos portapilas con la placa base tal y como se ve en la figura.

Los portapilas suministrarán energía cuando se conecten a la placa con el cable de conexión negro, independientemente de la posición de sus interruptores.

Practica



- 1 Haz una bola de papel, ¡intenta que no pese mucho!
- 2 Aprieta el botón POWER y luego RUN para seleccionar el modo 1 de funcionamiento del motor. Presiona RUN otra vez: el motor izquierdo girará en un sentido y el derecho en otro.
- 3 Sujeta el robot por el bloque azul y acércalo a la bola de papel para que la aspire.
- 4 Abre la trampilla posterior para sacar la bola de papel.